

VEHICLE EQUIPMENT
SAFETY COMMISSION

Regulation VESC-16

**MINIMUM REQUIREMENTS FOR THE DESIGN
OF A VEHICLE IDENTIFICATION NUMBER
SYSTEM FOR NON-MOTIVE POWERED
RECREATIONAL VEHICLES**

**Approved August 1975
Amended July 1977**

Suite 908
1030 15th Street, N.W.
Washington, D.C. 20005

VEHICLE EQUIPMENT SAFETY COMMISSION

Regulation VESC-16

**MINIMUM REQUIREMENTS FOR THE DESIGN
OF A VEHICLE IDENTIFICATION NUMBER
SYSTEM FOR NON-MOTIVE POWERED
RECREATIONAL VEHICLES**

**Approved August 1975
Amended July 1977**

Members—VIN Committee

CHAIRMAN

George O. Stevens
Driver & Vehicle Administrator
Michigan Dept. of State
Michigan

Philip Thorneycroft
Assistant Director
Dept. of Transportation
Arizona

Ralph Haller
Technical Consultant
AAMVA
District of Columbia

MEMBERS — EXECUTIVE COMMITTEE
(Public Hearing and Approval Board)

CHAIRMAN

Joseph P. Murphy
Director of Motor Vehicles
Washington, D.C.

Immediate Past Chairman

Ejner J. Johnson
Administrator
Motor Vehicle Administration
Maryland

Vice Chairman

John Bender
Director of Law Enforcement
Idaho

Secretary-Treasurer

George O. Stevens
Driver & Vehicle Administrator
Michigan Department of State
Michigan

Region I

Dr. Basil Y. Scott
Administrative Director
Department of Motor Vehicles
New York

Region II

Edward L. Powell
Commissioner
Division of Motor Vehicles
North Carolina

Region III

James O. Peterson
Administrator
Division of Motor Vehicles
Wisconsin

Region IV

Philip Thorneycroft
Assistant Director of Dept. of Transportation
Arizona

Dairl Bragg, Executive Director
Washington, D.C.

Table of Contents

Purpose	1
Scope	1
Definitions	1
Application	5
Promulgated Rules and Regulations	5
Requirements	5
Vehicle Descriptor Section (VDS) Content	5
Vehicle Descriptor Section (VDS) Structure	6
Vehicle Descriptor Section (VDS) Maximum Length	6
Vehicle Descriptor Section (VDS) Coding	6
Vehicle Indicator Section (VIS) Content	8
Vehicle Indicator Section (VIS) Structure	8
Vehicle Indicator Section (VIS) Fixed Length	8
Vehicle Indicator Section (VIS) Coding	8
Recreational Vehicle VIN System Schematic Design	10

1. Purpose:

- 1.1 The purpose of this regulation is to provide the states with a uniform minimum requirement for the design of a vehicle identification number (VIN) system for recreational or utility trailer vehicles: including camping trailers, travel trailers, fifth wheel travel trailers, boat trailers, utility trailers and items of motor vehicle equipment; including slide-in campers and pick-up covers.
- 1.2 It is designed to provide a unique vehicle identifier for the referenced types of vehicles for the interests of highway safety, motor vehicle registration and law enforcement utilization.

2. Scope:

- 2.1 The scope of this regulation is primarily directed to establish the minimum identification elements, codification criteria and the sequence of the identification elements contained in this trailer vehicle identification number system.

3. Definitions:

- 3.1 **Axle Configuration Field**—That field in the VIN which signifies the number of axles on a recreational or utility trailer vehicle. A single wheel trailer shall be specifically encoded and identified as such.
- 3.2 **Boat Trailer**—A vehicular portable unit mounted on wheels for towing by another vehicle; primarily designed and constructed for the transportation of boats used for recreational or travel use.
- 3.3 **Camping Trailer**—A vehicular portable unit mounted on wheels and constructed with collapsible partial side walls of fabric, plastic or other material which folds for towing by another vehicle and unfolds at the campsite to provide temporary living quarters for recreational, camping or travel use.
- 3.4 **Commissioner**—As hereinafter referred to within this regulation shall mean the appropriate state official or state agency responsible for promulgating rules and regulations governing motor vehicle title and registration administration.

- 3.5 **Field**—A set of numerals or alphabetic characters reserved for a specific element of information contained in the number.
- 3.6 **Fifth Wheel Travel Trailer**—A vehicular portable unit mounted on wheels of such size or weight as not to require special highway movement permits when drawn by a vehicle fitted with a fifth wheel hitch; primarily designed and constructed to provide temporary living quarters for recreational, camping or travel use.
- 3.7 **Fixed Length Field**—The nonvarying number of numerals or alphabetic characters assigned to a given field in the vehicle identification number.
- 3.8 **Make**—A distinctive trade name applied to a group of vehicles. “Make” and “Division” are synonymous. “Make” and “Manufacturer” may, or may not be synonymous.
- Example of Make—Ajax Able, Holiday Rambler and Continental Sprite.
- Example of Make and Manufacturer (synonymous)—Ajax Ajax.
- “Ajax” is a manufacturer, not a make.
- 3.9 **Make Code Repository**—The Society of Automotive Engineers maintains this facility for the purposes of ensuring accurate make coding assignments and to prevent the issuance of duplicate make codes.
- 3.10 **Manufacturer**—Any person, firm or corporation engaged in the production or assembly of recreational or utility trailer vehicles, slide-in campers and pick-up covers.
- 3.11 **Model**—The overall term applied to a recreational or utility trailer vehicle, denoting the make, type of trailer, axle configuration, series, length of trailer and model year.
- 3.12 **Model Year**—A year designation that shall be encoded in the VIN to reflect the model year in which the vehicle was produced. Not necessarily the year of manufacture, “model year” is used in similar context to the term “fiscal year”, which, in both instances may involve months of two calendar years, but not exceeding a total of twelve months.
- Exception**—In the introduction of a new make, or a new series within an established make, and the introduction occurs not more than six months prior to the model year forth-

coming, manufacturers may elect to designate the model year of such vehicles in the year of the model year forthcoming.

Example—The model year of the “Jones Company” is the period, September through August.

The “Jones Company” introduces a new series, the “Jet”, in March 1975, and designates these vehicles as 1976 models *through August, 1976*, a period of eighteen months.

In the instance of new regulatory requirements conflicting with the phase-in of a new series replacing an existing series, it is possible that the model year of the existing series could be extended to involve a period not to exceed twenty-four months.

3.13 Pick-up Cover—An item of motor vehicle or other equipment having a roof and sides but without a floor, designed to be mounted on and removable from the cargo area of a truck by the user.

3.14 Plant of Origin—The plant of origin wherein the VIN authorization is established, and the VIN is affixed to a vehicle.

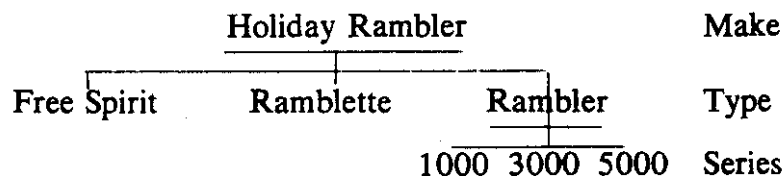
3.15 S.A.E.—The acronym for “Society of Automotive Engineers, Inc.”

3.16 Sequential Number—Also referred to as the “production number”. It consists of the last six characters of the VIN, and and when used in combination with model year and plant codes, identifies a given vehicle in a unique manner.

3.17 Series—A specific level of decor or opulence within a type of trailer classification, usually distinguished by some marketing term, and denoting a price class.

Example—

1. “Holiday Rambler” is a *make* of travel trailer.
2. “Rambler” is one of three types of travel trailers produced in the *Holiday Rambler make* identity.
3. Within the *Rambler* type of travel trailer, three variations or *series* are produced. Series 1000, 3000, 5000



- 3.18 Slide-in Camper—An item of motor vehicle equipment having a roof, floor and sides, designed to be mounted on and removable from the cargo area of a truck by the user.
- 3.19 Travel Trailer—A vehicular portable unit mounted on wheels, of such size or weight as not to require special highway movement permits when drawn by a vehicle; primarily designed and constructed to provide temporary living quarters for recreational, camping or travel use.
- 3.20 Utility Trailer—A vehicular portable unit mounted on a wheel or wheels, of such size or weight as not to require special highway movement permits when drawn by a vehicle; primarily designed and constructed for the transportation of property.
- 3.21 Vehicle Descriptor Section (VDS)—The first of the two basic sections of the vehicle identification number. It provides components of information which describe the vehicle. The elements of make, type of trailer, axle configuration, series and length of trailer shall be encoded within the vehicle descriptor section.
- 3.22 Vehicle Identification Number (VIN)—The number assigned to a vehicle by the manufacturer, primarily for motor vehicle registration and identification purposes.
- 3.23 Vehicle Indicator Section (VIS)—The second of the two basic sections of the vehicle identification number. It provides components of information relative to the specific identity of a given vehicle (sequential number), plant of origin and model year.
- 3.24 Vehicle Type Identifier—Recreational or utility trailer VINs may be distinguished from numbers of other types of vehicles (passenger cars, trucks, motorcycles, etc.) in that the three character make code is so constructed as to indicate that a VIN with this particular configuration of make code is none other than a recreational or utility trailer VIN, when followed by a numeric character in the fourth character position.
- 3.25 VIN—The acronym for vehicle identification number.
- 3.26 Year of Manufacture—The calendar year in which a vehicle is manufactured.

4. Application:

- 4.1 This regulation applies to all non-motive powered recreational or utility trailer vehicles, and items of motor vehicle equipment, including slide-in campers and pick-up covers.
- 4.2 "Make codes" required of manufacturers for vehicle identification purposes in this regulation are obtainable from the Society of Automotive Engineers, Inc.

Address inquiries to:

Society of Automotive Engineers, Inc.
Vehicle Make Repository
400 Commonwealth Drive
Warrendale, PA 15096

5. Promulgated Rules and Regulations:

- 5.1 The Commissioner shall promulgate rules setting forth requirements of a vehicle identification number system for recreational or utility trailer vehicles and items of motor vehicle equipment, including slide-in campers and pick-up covers, so that each recreational or utility trailer, slide-in camper and pick-up cover is described and identified in a unique manner, and that all recreational or utility trailer vehicle, slide-in camper, and pick-up cover identification number systems shall utilize the elements of identification, codification rules and sequence of the elements of identification as set forth in this regulation.

6. Requirements:

- 6.1 Recreational or Utility Trailer Vehicle Identification Number Basic Content—The VIN shall consist of a vehicle descriptor section followed by a vehicle indicator section.
- 6.2 Vehicle Descriptor Section (VDS)
 - 6.2.1 Vehicle Descriptor Section (VDS) Content — It shall contain the make identifier, type of trailer, axle configuration, series and length of trailer elements.

6.2.2 Vehicle Descriptor Section (VDS) Structure

- 6.2.2.1 The Make Identifier shall be the first field in the VDS.
- 6.2.2.2 Type of Trailer shall be the second field in the VDS.
- 6.2.2.3 Axle Configuration shall be the third field in the VDS.
- 6.2.2.4 Series shall be the fourth field in the VDS.
- 6.2.2.5 Length of Trailer shall be the fifth field in the VDS.

6.2.3 Vehicle Descriptor Section (VDS) Length — The number of characters contained in the VDS shall be eight.

6.2.4 Vehicle Descriptor Section (VDS) Coding

- 6.2.4.1 Make Identifier Field — It shall be a three-character code, as assigned by the Society of Automotive Engineers, Inc.
- 6.2.4.2 Type of Trailer Field—It shall be a one-character numeric code.
 - 6.2.4.2.1 Numeric one (1) identifies camping trailers
 - 6.2.4.2.2 Numeric two (2) identifies travel trailers
 - 6.2.4.2.3 Numeric three (3) identifies fifth wheel trailers
 - 6.2.4.2.4 Numeric four (4) identifies utility trailers, excluding van body type.
 - 6.2.4.2.5 Numeric five (5) identifies van body type utility trailers.
 - 6.2.4.2.6 Numeric six (6) identifies boat trailers.
 - 6.2.4.2.7 Numeric seven (7) identifies slide-in campers.
 - 6.2.4.2.8 Numeric eight (8) identifies pick-up covers

- 6.2.4.3 Axle Configuration Field—It shall be a one-character numeric code.
- 6.2.4.3.1 Numeric one (1) identifies “one-axle” construction
 - 6.2.4.3.2 Numeric two (2) identifies “two axle” construction
 - 6.2.4.3.3 Numeric three (3) identifies “three-axle” construction
 - 6.2.4.3.4 Numeric eight (8) identifies “single wheel” construction
 - 6.2.4.3.5 Numeric nine (9) identifies “no axle” (in slide-in campers and pick-up covers)
- 6.2.4.4 Series Field — It shall be a two-character alphabetic code. Alphabetic characters; Q and U shall not be used.
- 6.2.4.5 Length of Trailer—It shall be a one character alphabetic code, encoded within specified length ranges:

Code	ft	m
A	Less than 6	Less than 1.8
B	6 to less than 8	1.8 to less than 2.4
C	8 to less than 10	2.4 to less than 3.0
D	10 to less than 12	3.0 to less than 3.6
E	12 to less than 14	3.6 to less than 4.3
F	14 to less than 16	4.3 to less than 4.9
G	16 to less than 18	4.9 to less than 5.5
H	18 to less than 20	5.5 to less than 6.1
J	20 to less than 22	6.1 to less than 6.7
K	22 to less than 24	6.7 to less than 7.3
L	24 to less than 26	7.3 to less than 7.9
M	26 to less than 28	7.9 to less than 8.5
N	28 to less than 30	8.5 to less than 9.1
P	30 to less than 32	9.1 to less than 9.7
R	More than 32	More than 9.7

6.2.5 Vehicle Indicator Section (VIS)

6.2.5.1 Vehicle Indicator Section (VIS) Content—
It shall contain model year, plant of origin and sequential number.

6.2.5.2 Vehicle Indicator Section (VIS) Structure—
The model year, plant of origin and sequential number shall appear in that sequence.

6.2.5.3 Vehicle Indicator Section (VIS) Fixed Length
The VIS shall contain eight characters.

6.2.5.4. Vehicle Indicator Section (VIS) Coding—

6.2.5.4.1 Model Year Field—The model year code shall be the first character of the VIS and shown in a one-character field.

TABLE—Characters to be used for designating the model year

YEAR	CODE	YEAR	CODE	YEAR	CODE
1971	1	1981	B	1991	M
1972	2	1982	C	1992	N
1973	3	1983	D	1993	P
1974	4	1984	E	1994	R
1975	5	1985	F	1995	S
1976	6	1986	G	1996	T
1977	7	1987	H	1997	V
1978	8	1988	J	1998	W
1979	9	1989	K	1999	X
1980	A	1990	L	2000	Y

6.2.5.4.2 Plant of Origin Field—The plant of origin code shall be the second character of the VIS and shown in a one-character alpha field. Alphabetic characters; Q and U shall not be used.

6.2.5.4.3 Sequential Number Field — The sequential number shall be the third and last field of the VIS. It shall contain six numeric characters.

6.3 Secondary Characteristics — Any field within the VIN may reflect more than the required characteristics, as long as the primary requirements are within compliance of this regulation.

Example — The sequential number shall consist of six numeric characters, a factor with this regulation.

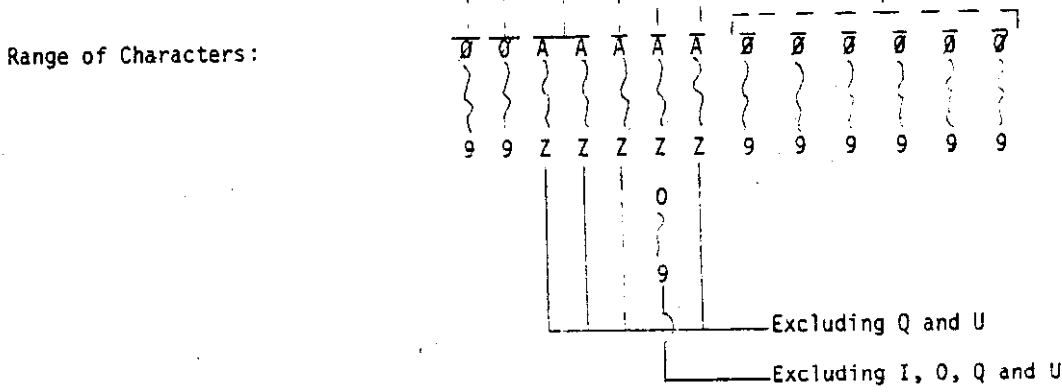
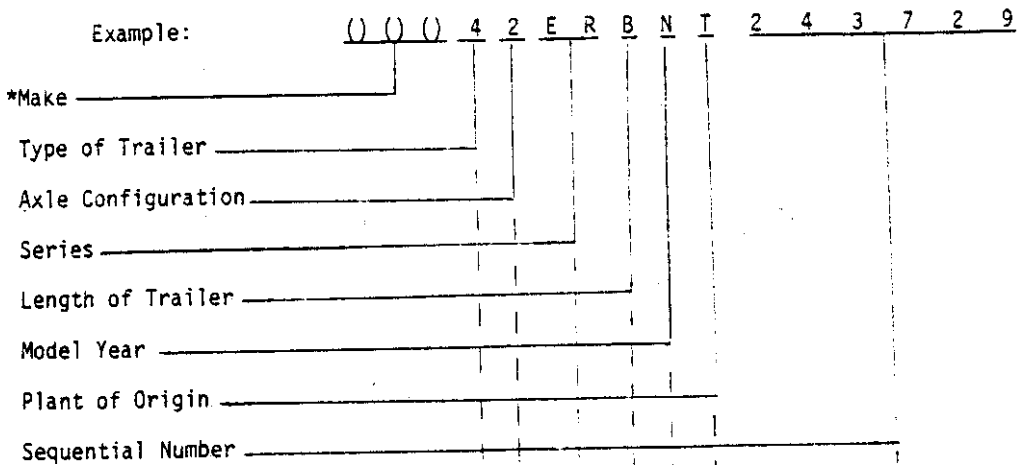
A given manufacturer with two divisions may elect to utilize the high-order digit of the sequential number as an internal make code.

Such as — 512346 as an internal make identity. 5 is the high-order digit, meaning that 5 through 9 identify one division (Make), while "1" through "4" in the high-order digit position identify the second division (Make).

Such practice involves internal operation practices of a manufacturer and/or in the application of the non-public VIN applied for Law enforcement purposes.

VIN SCHEMATIC DESIGN

	Vehicle Descriptor Section								Vehicle Indicator Section							
Character of the VIN	1	2	3	4	5	6	7	8	9	10	11	12	13	14	15	16
Type of Character	()	()	()	N	N	A	A	A	B	A	N	N	N	N	N	N
(A=Alpha N=Numeric B=Alpha or Numeric)																



*See Section 4.2

Note: It is suggested that the characters of the VIN be displayed on forms and communications in block format as indicated below.

*	*	*	4	2	E	R	B	N	T	2	4	3	7	2	9
---	---	---	---	---	---	---	---	---	---	---	---	---	---	---	---

*Make Codes as assigned by the Society of Automotive Engineers, Inc.

VE
SIC